



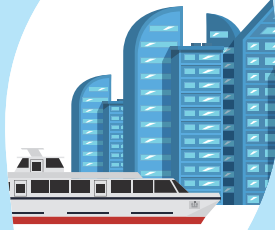
PUSAN NATIONAL UNIVERSITY

APRU Member University

# 2024 PNU SUMMER SCHOOL

Busan, Korea

July 1 - July 26 (4 weeks)



# WHY PNU & Program Specifics



## PNU Summer School, where summer begins!

*Experience Korea Like Never Before!*

Are you ready to embark on an unforgettable journey into the heart of Korean culture? Look no further! PNU Summer School is back and better than ever, offering an immersive experience that will leave you with memories to cherish for a lifetime.

- **Breathtaking Location & Complete Hospitality** : Enjoy the summer at its best by staying in the picturesque city of Busan, a coastal gem known for its stunning beaches, and vibrant markets. Friendly PNU staffs and buddies will make you feel right at home.
- **Intensive Korean Class** : Seize the chance to enhance your Korean skill and broaden your horizons. Join the class that suits your level to achieve optimal effects by taking pre-level test.
- **Unique Blend of Tradition and Modernity** : Have an exhilarating experience and learn significant Korean culture by joining special classes (Taekwondo, Korean food, K-pop Dance, K-Beauty, etc.) and visiting famous tourist spots near Busan.

### Program Specifics

Common Features	<b>4-week program</b>
Credits	<b>3 credits (Korean Studies)</b>
Schedule	<b>July 1 – July 26</b>

### Academic Standings

- # 1 in National University in South Korea (2015 - Present)
- # 1 in industry- academic cooperation in South Korea (2016)
- # 2 in fund of 「BK 21 FOUR」 Program (government-funded graduate education-research program) (2021)
- # 5 in number of CEOs in Korea's Top 10 companies (2020/2021) (# 1 in Hyundai Motors and Hyundai Heavy Industries)
- # 5 by Brand- Reputation Index in Korea (2020/2021)
- # 201~ 300 by THE Impact Rankings (2023)
- # 101~ 200 / 200~ 300 by QS World University Rankings (Mechanical Engineering, Aerospace, Architecture, Chemical Engineering, Civil Engineering, Pharmacy, and Material Sciences, 2020)
- # 6th Korean/61st global member university of APRU (Asia Pacific Rim Universities, 2021)

# Application & Fees



Nomination



Application



Announcement  
of successful  
applicant



Level Test  
(Zoom)



Fee Payment



Entering  
Korea

## Eligibility

This program is open to all international students who have completed at least one semester in college or university.

## How to Apply

Deadline **May 3**

\* Early Bird by **April 3**

Nomination | <https://sep.pusan.ac.kr/inbound/exchange/manager>

Application | <https://sep.pusan.ac.kr/inbound/exchange/login>



▲ Nomination



▲ Application

Students from exchange partner universities must be nominated by their home universities before submitting the online application.

## Application Documents

Photo / Copy of passport / Study plan / Copy of transcript / Copy of bank statement / Certificate of Enrollment from home university  
All documents should be in English.

## Program Fee

Regular Fee  
**2,118,000 KRW**

Students who are nominated by PNU's exchange partner universities and APRU member universities will get a 15% discount as a scholarship from the program fee.

**20%**

Group\* discount for PNU exchange partner universities and APRU member universities  
**1,694,400 KRW**

\*more than 6 students, based on the number of final payment registrations

**15%**

Discount for PNU exchange partner universities and APRU member universities  
**1,800,300 KRW**

**10%**

Discount for Early Bird  
**1,906,200 KRW**

## Korean Language Level Test (Zoom)

**May 9** 🕒 20:00 ~  
(based on KST)

We are going to check the suitable division through the pre-level test with zoom.

## Fee Payment

Deadline **May 19**

We accept payment only through flywire. The program fee invoice will be issued to applicants after the pre-level test.





## Cancellation and Refund Policy

Refund amount varies by refund request period; overseas remittance fee is borne by the person subject to refund. Cancellation requests should be made by email to [summer@pusan.ac.kr](mailto:summer@pusan.ac.kr)

### Until May 24 (Fri)

Refund after deducting registration fee (120,000 KRW)

### From May 25 (Sat) to June 2 (Fri)

Refund after deducting dormitory fee (602,500 KRW) and registration fee (120,000 KRW)

### From June 1 (Sat)

Non-refundable

## Accommodation

🏠 Check in : 9 a.m. July 1

🏠 Check out : 12p.m. July 26

PNU on-campus dormitories are fully equipped with twin beds (two students per room). Meals (breakfast and dinner) are provided at the dormitory cafeteria without extra charge (cooking is not permitted). Other facilities include showers, laundry facilities (coin-operated washing machines and dryers), student lounges, and a gym. Every room is equipped with LAN connection for the Internet use. TB test result paper is required to enter the dormitory.

## Medical Insurance

The program fee does not cover medical insurance for participants. Students must purchase their own medical insurance before entering Korea.

## Inquiry

🏠 [international.pusan.ac.kr](http://international.pusan.ac.kr)

✉ [summer@pusan.ac.kr](mailto:summer@pusan.ac.kr)

☎ +82-51-510-3623

